

Junonia agnesberenyiae sp. nov. (Lepidoptera, Nymphalidae, Nymphalinae) from the Nimba Mountains (Guinea), West Africa

Published online: 15 December 2018

urn:lsid:zoobank.org:pub: 874A104B-8A56-4CF5-ADD6-8BE9B219DA4D

Szabolcs Sáfíán

African Natural History Research Trust Street Court, Kingsland, Leominster, Herefordshire HR69QA, UK.

Hungarian Natural Heritage Trust, H-9945 Fő út 57 Kercaszomor, Hungary. E-mail: szsafian@gmail.com

Copyright © Lepidopterists' Society of Africa

Abstract: A new taxon of *Junonia* near *ansorgei* was collected by the author during a butterfly survey in the Nimba Mountains, Guinea in 2017. Careful comparison with a series of *J. ansorgei* from various localities throughout its distribution, including examination of the COI gene of both taxa revealed that the two are not conspecific and the new species is described as *Junonia agnesberenyiae* sp.nov. *J. agnesberenyiae* inhabits the montane slope and gallery forests of the Nimba Mountains above 1500 m (asl.) and is probably endemic to the montane zone of the Guinea Highlands and thus the new species is of conservation concern.

Key words: Lepidoptera, Nymphalidae, new species, endemism, montane forest, Guinea Highlands

Citation: Sáfíán, Sz. 2018. *Junonia agnesberenyiae* sp. nov. (Lepidoptera, Nymphalidae, Nymphalinae) from the Nimba Mountains (Guinea), West Africa. *Metamorphosis* 29: 126–131.

INTRODUCTION

During a butterfly survey in the Nimba Mountains, Guinea in May-June 2017 the author and his team captured a small series of a Nymphalidae, closely resembling the Eastern-Central African *Junonia ansorgei* (Rothschild, 1899) but with visibly more extensive metallic green on the upper surface including a sub-apical patch with a characteristically dentated inner edge. The extreme disjunction from the nearest known occurrences and morphological differences indicated that the Nimba population represents an undescribed taxon near *J. ansorgei* but the differences of wing pattern alone were not sufficiently pronounced to allow a decision on its taxonomic status. It was therefore logical to involve dissections of male genitalia and extraction of the COI section of mitochondrial DNA for comparison, which, along with a biogeographical overview of the known populations, allowed recognition of a new species, which is described below.

MATERIALS AND METHODS

Extensive *J. ansorgei* material was examined in the Natural History Museum (NHM), London (44 specimens from Cameroon, Democratic Republic of Congo (DRC), Uganda, Ethiopia, Tanzania and Kenya) and the African Butterfly Research Institute (120 specimens from Cameroon, DRC – mainly Kivu,

Uganda, Tanzania, Zambia and Ethiopia) to justify the recognition of the new species, as well as illustrations of specimens from various populations, including those collected in North-western Zambia.

Images of the published literature were also studied (Berger, 1981; Heath *et al.*, 2002; Larsen, 1991; d'Abrera, 1997) and high resolution images of two voucher specimens (catalogue numbers: YPM ENT 412395, YPM ENT 412397) on the homepage of Yale, Peabody Museum of Natural History (collections.peabody.yale.edu) were viewed online. The available distribution records were also used in the biogeographic overview of the species.

The dissection techniques and the digital process of images follow Pycrz & Sáfíán (2018), the author uses the simplified “English” or numerical system in reference for venation described by Miller (1970).

To obtain COI sequences, DNA was extracted using NucleoSpin@Tissue (Macherey-Nagel) according to manufacturer's instruction. Primers HybLCO and HybHCO were used for amplification of *COI* mitochondrial marker. They are universal primers LCO1490 and HCO2198 (Folmer *et al.* 1994) adjusted with a T7/T3 universal primer pair (Wahlberg & Wheat, 2008). PCR was performed with a following cycle: 95°C – 5 minutes, 40x(94°C – 30 seconds, 50°C – 30 seconds, 72°C – 90 seconds), 72°C – 10 minutes. PCR results were checked by agarose gel electrophoresis with Midori Green DNA Stain. Purification and sequencing was performed by Macrogen (Netherlands). The sequence was compared with the available voucher sample of *J. ansorgei* (NW 139-1), collected by Freerk Molleman in Uganda and sequenced by Niklas Wahlberg (<http://www.nymphalidae.net/story.php?code=NW139-1>).

Received: 1 October 2018

Published: 15 December 2018

Copyright: This work is licensed under the Creative Commons Attribution-NonCommercial-NoDerivs 3.0 Unported License.

To view a copy of this license, send a letter to Creative Commons, Second Street, Suite 300, San Francisco, California, 94105, USA, or visit: <http://creativecommons.org/licenses/by-nc-nd/3.0/>

Abbreviations

ANHRT: African Natural History Research Trust, Leominster, United Kingdom.

ABRI: African Butterfly Research Institute, Nairobi, Kenya.

MZUJ: Nature Education Centre, Jagiellonian University, Kraków, Poland.

DESCRIPTION OF NEW SPECIES

Genus *Junonia* Hübner, [1819]

In: Hübner, [1816–[1826]. *Verzeichniss bekannter Schmettlinge* 34 (432 + 72 pp.). Augsburg. Type-species: *Papilio lavinia* Cramer, by subsequent designation (Scudder, 1872 *Report of the Peabody Academy of Science* 1871: 43 (24–82)).

Junonia agnesberenyiae sp. nov. (Figs 1A, 1D; 2A, 2D; 3A, 3D; 4A, 4D)

urn:lsid:zoobank.org:act: 2BFA12F4-D7F6-4B76-821B-A9AE17B5F1BE

Holotype: ♀ Guinea, Nimba Mountains (Monts Nimba) Mont Pierre Richeaud 01-13.VI.2017. Leg.: Sáfián, Sz. Coordinates: 7°39'49.93"N, 8°22'22.19"W. Elevation: 1500 m. Depository: African Natural History Research Trust (ANHRT), Leominster, UK. ANHRT code: ANHRT00029115.

Paratypes: 2 ♂; 3 ♀ as for Holotype, deposited in ANHRT, ABRI and MZUJ.

Facies

Holotype – female (Figs 1A, 1D):

Wingspan: 57.5 mm. Forewing length: 33.5 mm, mean 21.2 mm. Antennae: 13 mm.

Wing shape unique dead-leaf-mimicking with pointy forewing apex and strongly concave outer margin. Hindwing edge strongly rounded, prolonged into a narrow tail-like tornal projection at end of vein 1. Ground colour black, overlaid with metallic green on basal two-thirds of both wings. Green colour extends into apical area on forewings, separated by black band of zigzagging outer and diffuse inner edge. Green sheen is also present as bands along margins of both wings and submarginal lines. Marginal area also shows blue sheen in artificial illumination, stronger on hindwing. Hindwing sub-tornal area has dark-red, black eyespot with blue central dot. Underside dark, almost blackish-brown with dark olive-green pattern and dark cross-bands present on both wings: narrow one on forewing extending from vein 1 to vein 5 on, broader one on hindwing, extending from tip of tornal projection to costa. Entire underside shows metallic reflection of various colours from green to deep purple in artificial illumination. Both wings also speckled with tiny green dots-scales. Eyespot present but smaller also on underside. Body dark brown, densely covered with hairs with metallic sheen on dorsal and deep purple on ventral side. Legs dark grey, antennae are black on dorsal, pale yellowish-grey on ventral side. Clubs black with yellow tip.

Paratype male (Figs 2A, 2D):

The appearance of male *J. agnesberenyiae* is very similar to females, showing virtually no dimorphism between sexes, except the smaller size and the even more acute apex of males. Apical green patch might be disconnected from main green forewing patch.

Genitalia

Male (Figs 3A, 3D)

Compact, cylindrical and very strongly sclerotised. Uncus long, bird beak-like in lateral view, pointy, triangular-shaped in dorsoventral view. Tegumen curving down into triangular saccus, Valvae specialized, crescent-shaped, ending in elongate strongly toothed fist-like process and an additional thumb-like lobe present below tip. Sacculus bold at base with spine like posterior saccular process. Tip ends in hairy saccular extension. Aedeagus lanceolate, gently bent with spiny tip.

Differential diagnosis

J. agnesberenyiae is readily recognisable from its metallic green patch with strongly toothed inner edge in the sub-apex of forewing in both sexes (attached to the main green area with a line in most females), which feature is missing from all other populations of *J. ansorgei*. Beside this instantly recognisable difference, other diagnostic features are present, including the significantly acuter forewing apex and more drawn out (concave) outer margin of both sexes in *J. agnesberenyiae*. They also differ in key features in the male genitalia, particularly in the tip of the terminal process of valvae, which is very bold and more strongly toothed in *J. agnesberenyiae*.

Etymology

The author names this beautiful butterfly in honour of Ágnes Berényi of Balatonfüred, Hungary, ex-university friend of the author in Sopron.

DISCUSSION

The case of *J. agnesberenyiae* is borderline, where the main question is whether the population in the Nimba Mountains really differs sufficiently from *J. ansorgei* to be recognised as a distinct species rather than as a subspecies of the latter. Superficially, the two are morphologically so similar that they could easily be considered conspecific. Even the only partially extracted COI sequence (658 bp) shows a borderline case, where *J. agnesberenyiae* differs in the COI sequence from the publicly available sequence of *J. ansorgei* by 2%, while the currently recognised threshold in Nymphalidae is approximately 4% (Aduse-Poku, pers. comm.). However, its biogeographic position and habitat speciation support that *J. agnesberenyiae* deserves recognition as a full species.

Biogeography

The nearest records of *J. ansorgei* are from the Bamenda Highlands near Sabga (2 specimens) approximately 2000

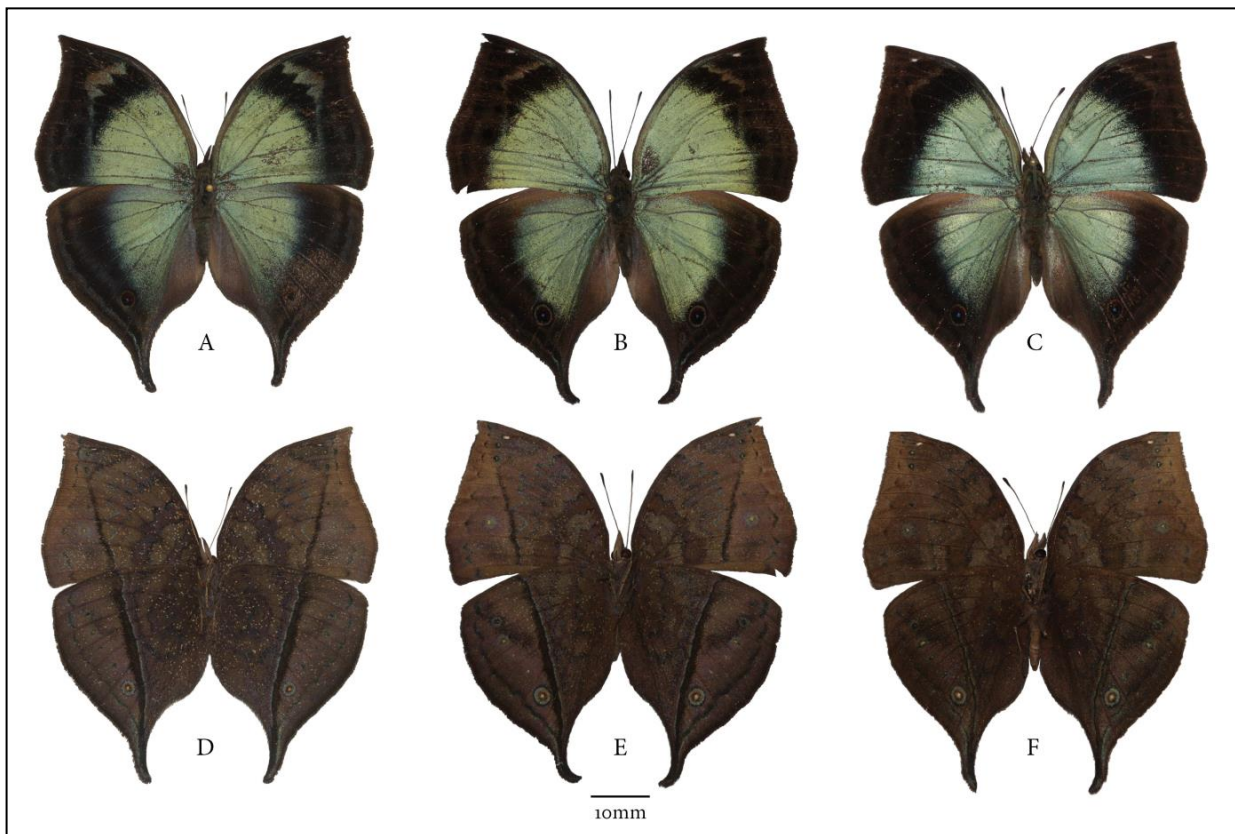


Figure 1 – Females. *J. agnesberenyiae* sp. nov. (holotype) A – recto, D – verso; *J. ansorgei* (Kivu, DRC) B – recto, E – verso; *J. ansorgei* (Mount Tabenken, Cameroon) C – recto, F – verso.

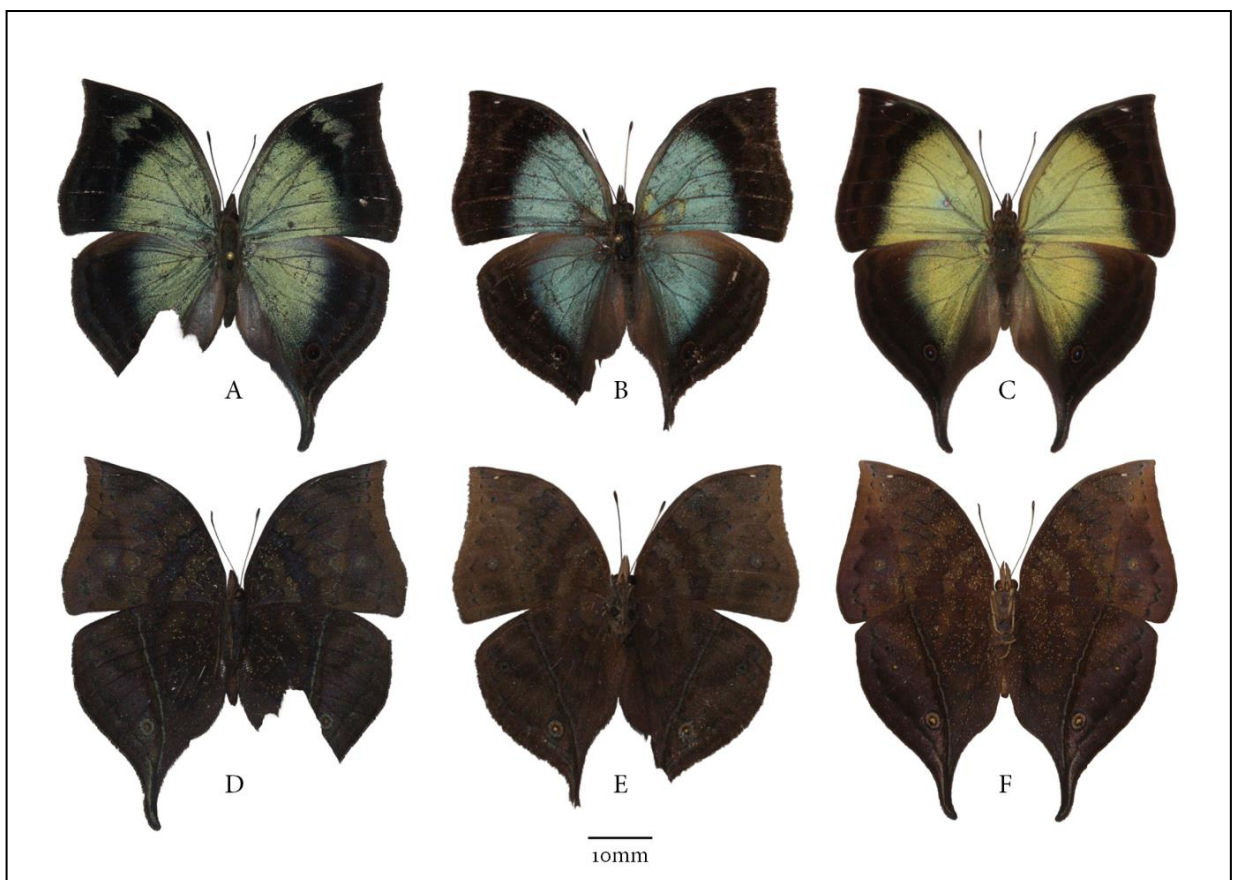


Figure 2 – Males. *J. agnesberenyiae* sp. nov. (paratype) A – recto, D – verso; *J. ansorgei* (Mount Tabenken, Cameroon) A – recto, E – verso; *J. ansorgei* (Semliki, Uganda) C – recto, F – verso.

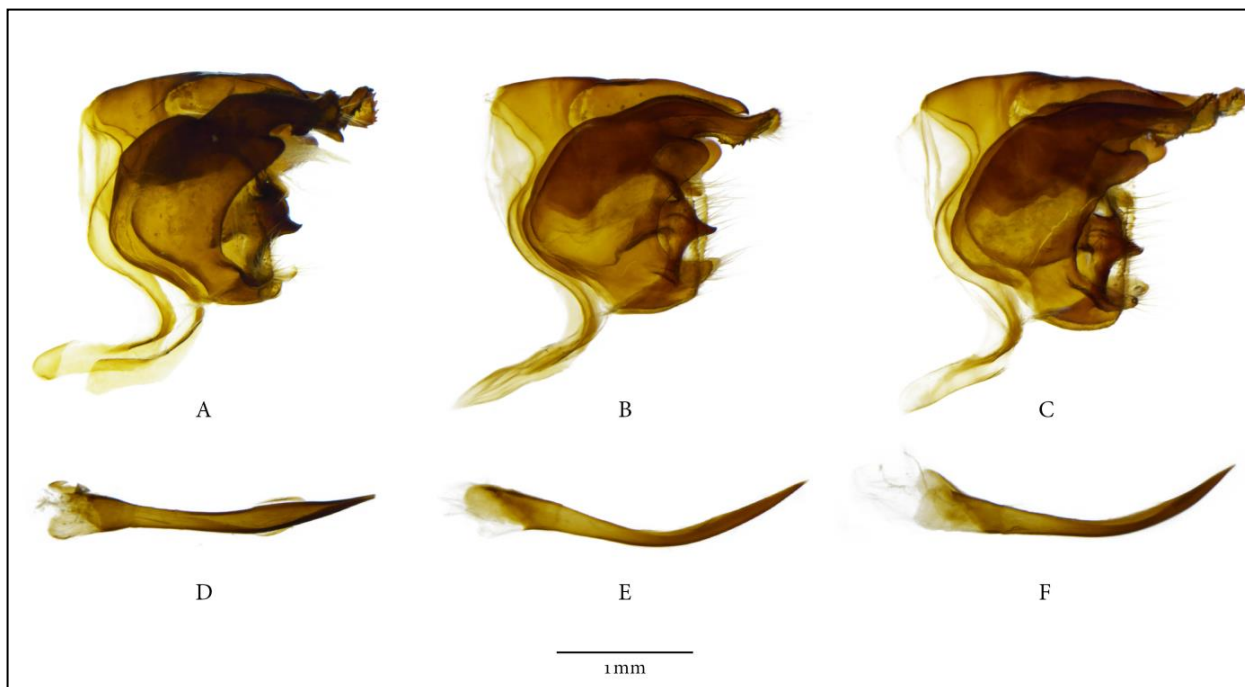


Figure 3 – Male genitalia (lateral view) and separated aedeagi of *J. agnesberenyiae* sp. nov. (paratype) – A, D; *J. ansorgei* (Mount Tabenken, Cameroon) – B, E and *J. ansorgei* (Semliki, Uganda) – C, F.

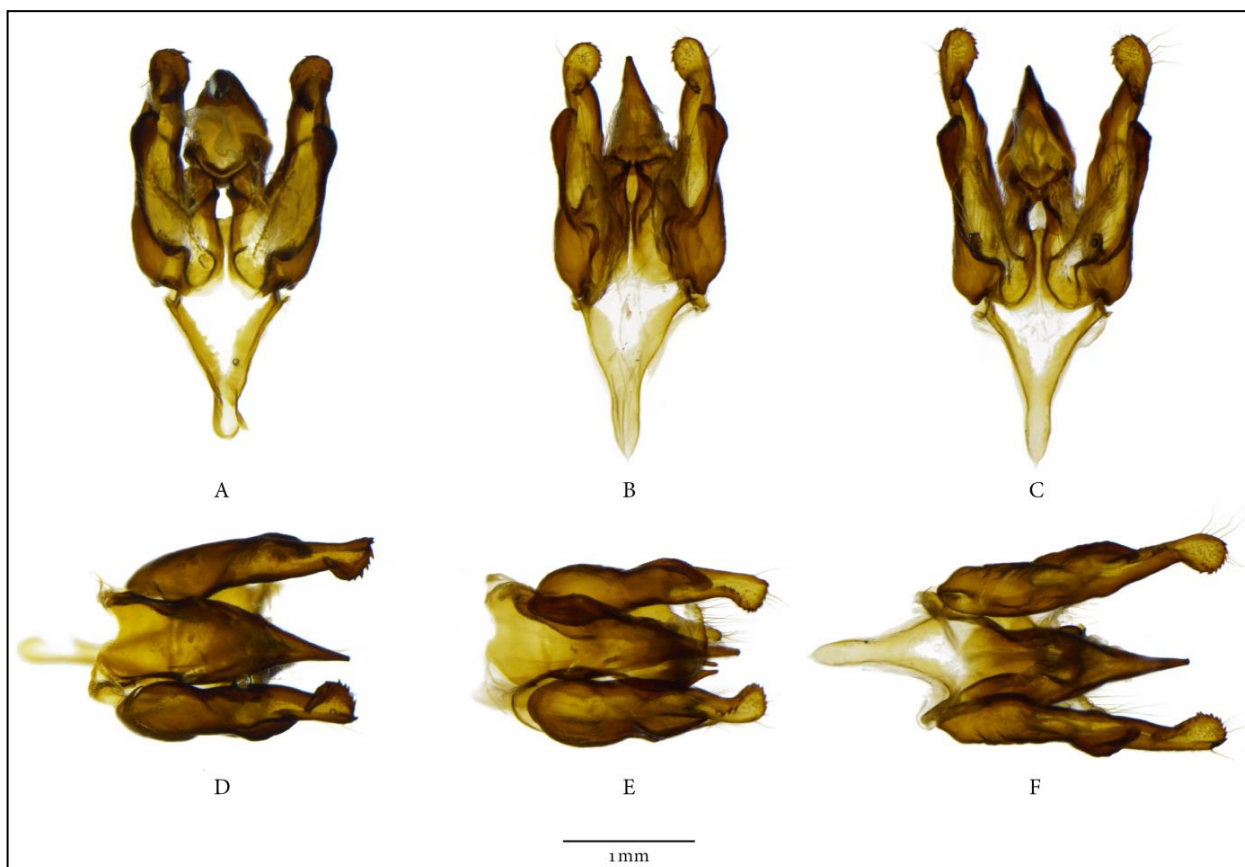


Figure 4 – Male genitalia (posterior and dorsal views) of *J. agnesberenyiae* sp. nov. (paratype) – A, D; *J. ansorgei* (Mount Tabenken, Cameroon) – B, E and *J. ansorgei* (Semliki, Uganda) – C, F.

km away from the Nimba Mountains, where the species was collected at about 1300 m asl. Further Cameroonian material from Bamboutos Mountains, Mount Mbam, and Mount Tabenken was found in the ABRI collection. These

specimens were examined, and they could not morphologically be considered distinct from the nominate subspecies, with no or only minimal metallic green scaling in the apex. The extreme disjunction of *J. agnesberenyiae*

and adaptation to montane forest habitat has certainly allowed significant divergence of the taxa. The differences in wing pattern show stability over the type series and the many examined specimens of *J. ansorgei*. Male genitalia also show readily recognisable differences. It must be stressed that virtually no similar montane habitats exist between the Cameroon Highlands and the Nimba Mountains.



K. Sterelein

Figure 5 – Freshly hatched female *J. agnesberenyiae*, sunning along a forest edge at the type locality, Nimba Mountains, Guinea.



Figure 6 – Type locality and habitat of *J. agnesberenyiae* – montane forest in the Nimba Mountains (600 Forest, Mont Pierre Richeaud).

The only mountain range that reaches over 1200 m a.s.l. are found in the Jos Plateau area in Northern Nigeria, but the entire plateau is now too dry to maintain sub-montane or montane forest habitats. This applies also to the scattered mountains in Northern Ivory Coast, where such habitats could have existed during period of the last forest maximum of the Guineo-Congolian forest zone, which ended approximately 6000 years ago (Hamilton & Taylor, 1991), but since the butterfly is much more specialised on sub-montane and montane forests, it is also very sedentary and does not seem to fly much spontaneously, it is more likely that the possible common ancestor was rather widely distributed during one of the wetter interglacial periods or even before the first northern hemispheric glaciation.

Similar biogeographic pattern is not unusual in Africa, with even ecologically more tolerant species separated by the well-recognised biogeographic boundaries, such as the Dahomey Gap. One of the more striking examples is *Euphaedra ruspina* (Hewitson, 1865), which is separated from its very different relative *E. perseis* (Drury, 1773) only by the River Volta and a narrow stretch of savannah land.

Using COI gene sequences, it was recently confirmed that Libert (2005) made a correct reinstatement of *H. decira* (Plötz, 1880) for the populations formerly treated as *Heteropsis peitho* (Plötz, 1880) west of the Dahomey Gap. Although the difference in COI barcodes between these two species exceeded 4% (Aduse-Poku *et al.*, 2016), they show no significant morphological differences.

Several other species were recognised recently with similar distribution patterns, including the Liberian sub-region endemic *Cephetola wingae*, *Stempfferia katikae*, and *Pilodeudorix mano* (Sáfián, 2015a; 2015b). The closest case is that of *Uranothauma belcastroi* Larsen, 1997. It differs little from *U. frederikkae* Libert, 1993, which occurs only in the sub-montane, montane zone of the Nigeria-Cameroon Highlands. In analogy to *J. agnesberenyiae*, *U. belcastroi* is very localised and found only in a few mountains in the Guinea Highlands, but sometimes also at lower altitude compared to *J. agnesberenyiae* (Larsen, 2005).

Conservation

J. agnesberenyiae seems to be a very localised species, inhabiting sub-montane and montane forests above 1500 m asl. in the Nimba Mountains, and possibly also other high mountains in the Guinea Highlands. The extent of such montane habitats is usually restricted to gullies on the higher slopes and small flatter plateaus or depressions along the ridge of the Nimba Mountains and even the extent of potential habitat is probably less than about 1000 hectares. Currently, *J. agnesberenyiae* is known to occur in a single locality, with a possible unconfirmed sighting in the Simandou Mountains, further northwest in Guinea in similar habitat. Other localised populations could potentially still occur in West African mountains reaching above 1500 m asl., including the montane forests of the Tingi and Loma Mountains in Sierra Leone but probably excluding the already drier highest peaks of the Fouta Djallon area in North-western Guinea. Using IUCN criteria to assess its conservation status, *J. agnesberenyiae* currently falls in the category of Critically Endangered (CR B2a) with only a single population existing and an area of occupancy of <10 km². Potential threats are identified as natural landslides, human induced fire combined with extreme climatic events (drought), human caused climate change and potential mining operation in the close vicinity of the habitats (IUCN, 2012).

ACKNOWLEDGEMENTS

The author is indebted to Tomasz Pyrcz, director of Nature Education Centre, Jagiellonian University, Kraków, Poland (MZUJ) for the extensive discussions over the new

taxon, also for helping with barcoding *J. agnesberenyiae*. Thanks to Beniami Waclawik (Institute of Zoology and Biomedical Research, UJ, Kraków), who extracted DNA, produced PRC and sent them for sequencing. Also, to Jadwiga Lorenc (MZUJ), who helped with dissections and took high quality images of the genitalia of *J. agnesberenyiae* and males of *J. ansorgei* from different populations. This really helped revealing the real identity of the new species. Thanks to David Lees and Blanca Huertas, who assisted the author's visit in the NHM, London to examine the extensive *J. ansorgei* material and to Steve C. Collins (ABRI, Nairobi) with whom the author discussed the distribution and status of *J. ansorgei* over the four drawers of specimens collected virtually from all previously known localities of the species. Renátó Molnár kindly helped editing the plates. The new finding and the description of the taxon would not have been possible without the support of butterfly studies in the Nimba Mountains by the Société des Mines de Fer de Guinée, Guinea (SMFG) and its environmental program coordinated by Jamison D. Suter and assisted by Guy Parker. Katina Strelein kindly donated her nature photo for the publication. The specimens were collected and exported with permit (Code: 100 No. 008) issued by 'Ministère Délégué à L'Environnement, Eaux et Forêts, Direction Nationale des Eaux et Forêts', Republic of Guinea.

LITERATURE CITED

- ADUSE-POKU, K., LEES, D. C., BRATTSTRÖM, O., KODANDARAMAIAH, U., COLLINS, S.C., WAHLBERG, N., BRAKEFIELD, P.M. (2016) Molecular phylogeny and generic-level taxonomy of the widespread palaeotropical 'Heteropsis clade' (Nymphalidae: Satyrinae: Mycalesina). *Systematic Entomology* **41**: 717–731. DOI: 10.1111/syen.12183.
- BERGER, L. A. (1981) Les papillons du Zaïre. Weissenbruch, Bruxelles. 323 pp + 213 colour plates.
- FOLMER, O., BLACK, M., HOEH, W., LUTZ, R. and VRIJENHOEK, R. (1994) 'DNA primers for amplification of mitochondrial Cytochrome C Oxidase Subunit I from diverse metazoan invertebrates', *Molecular Marine Biology and Biotechnology* **3(5)**: 294–299.
- HAMILTON, A.C., TAYLOR, D. (1991) *History of Climate and Forests in Tropical Africa During the Last 8 Million Years*. In: Myers, N. (ed) *Tropical Forests and Climate*. Springer, Dordrecht. 65–78.
- HEATH, A., NEWPORT M.A. & HANCOCK, D. (2002). *The butterflies of Zambia*. African Butterfly Research Institute and The Lepidopterists' Society of Africa 137 pp + 17 colour plates.
- IUCN. (2012). IUCN Red List Categories and Criteria: Version 3.1. Second edition. Gland, Switzerland and Cambridge, UK: IUCN. iv + 32 pp.
- LARSEN, T.B. (1991) *The Butterflies of Kenya and their Natural History*. Oxford University Press, Oxford. 490 pp. + 22 colour plates.
- LARSEN, T.B. (2005) *Butterflies of West Africa*. Apollo Books, Svendborg, Denmark. 595 pp + 135 colour plates.
- MILLER, L.D. (1970) Nomenclature of wing veins and cells. *Journal of Research on the Lepidoptera* **8**: 37–48.
- PYRCZ, T.W. & SÁFIÁN, Sz. (2018). A new subspecies of *Cymothoe fumana* (Westwood, 1850) from Western Nigeria (Lepidoptera: Nymphalidae: Limenitidinae). *Metamorphosis* **29**: 5–8.
- SÁFIÁN, Sz., COLLINS, S.C. & LIBERT, M. (2015) Descriptions of seven new *Pilodeudorix* Druce, 1891 from equatorial Africa (Lepidoptera: Lycaenidae: Theclinae). *Metamorphosis* **26**: 62–78.
- WAHLBERG, N. & WHEAT, C.W. (2008). Genomic Outposts Serve the Phylogenomic Pioneers: Designing Novel Nuclear Markers for Genomic DNA Extractions of Lepidoptera. *Systematic Biology* **57(2)**: 231–242.